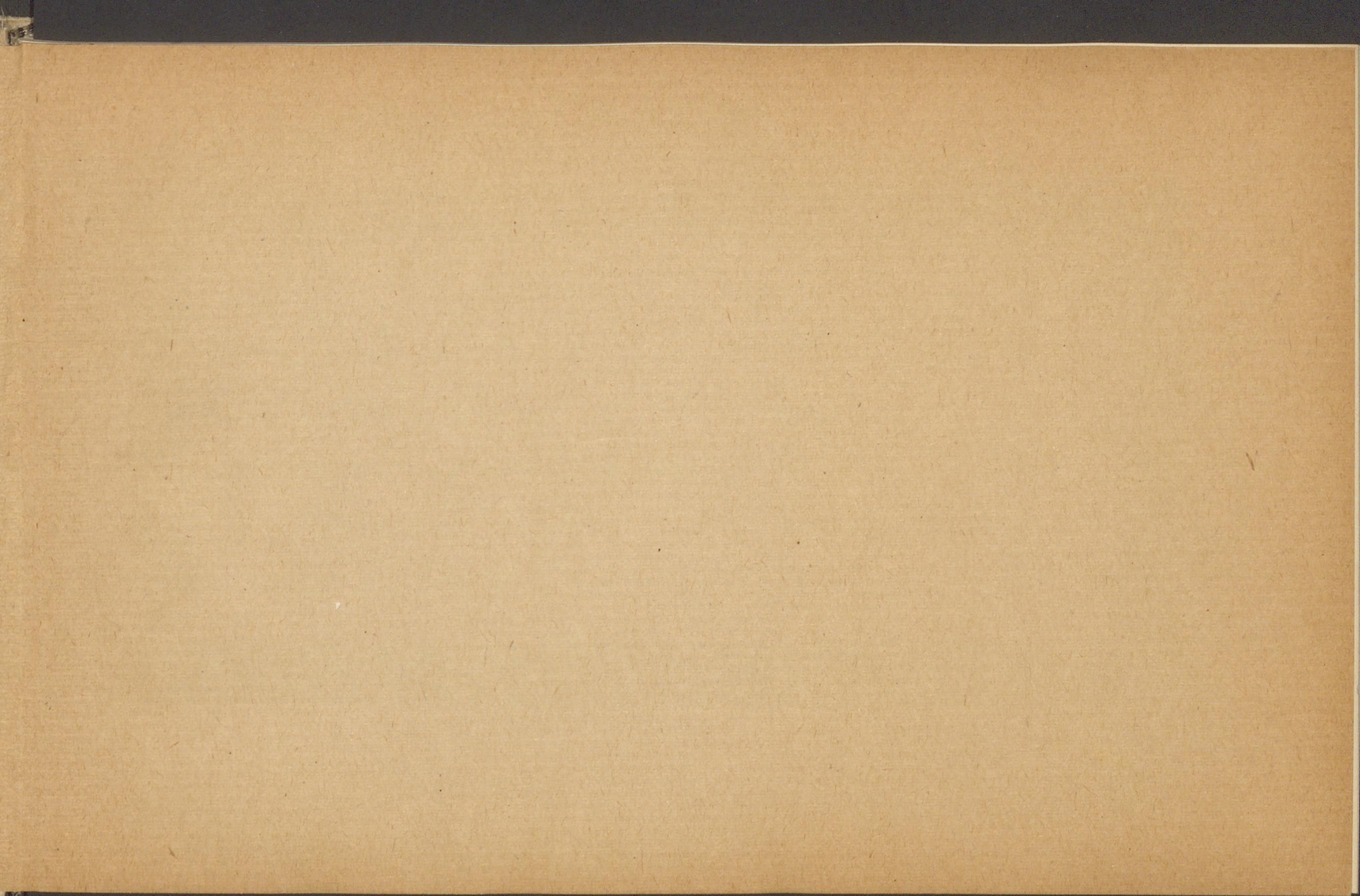
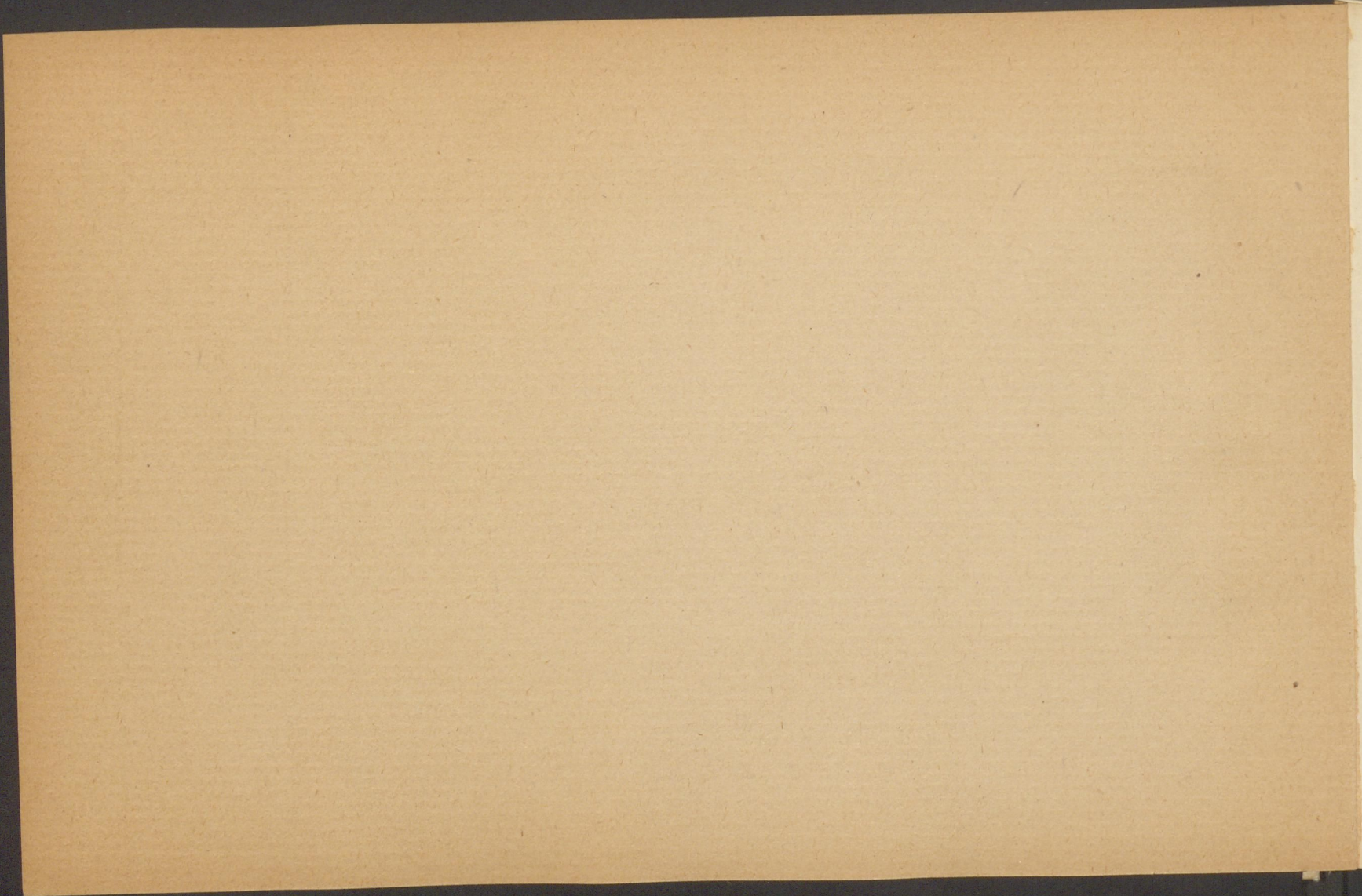


das  
ABC  
büchlein  
†  
o



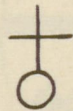




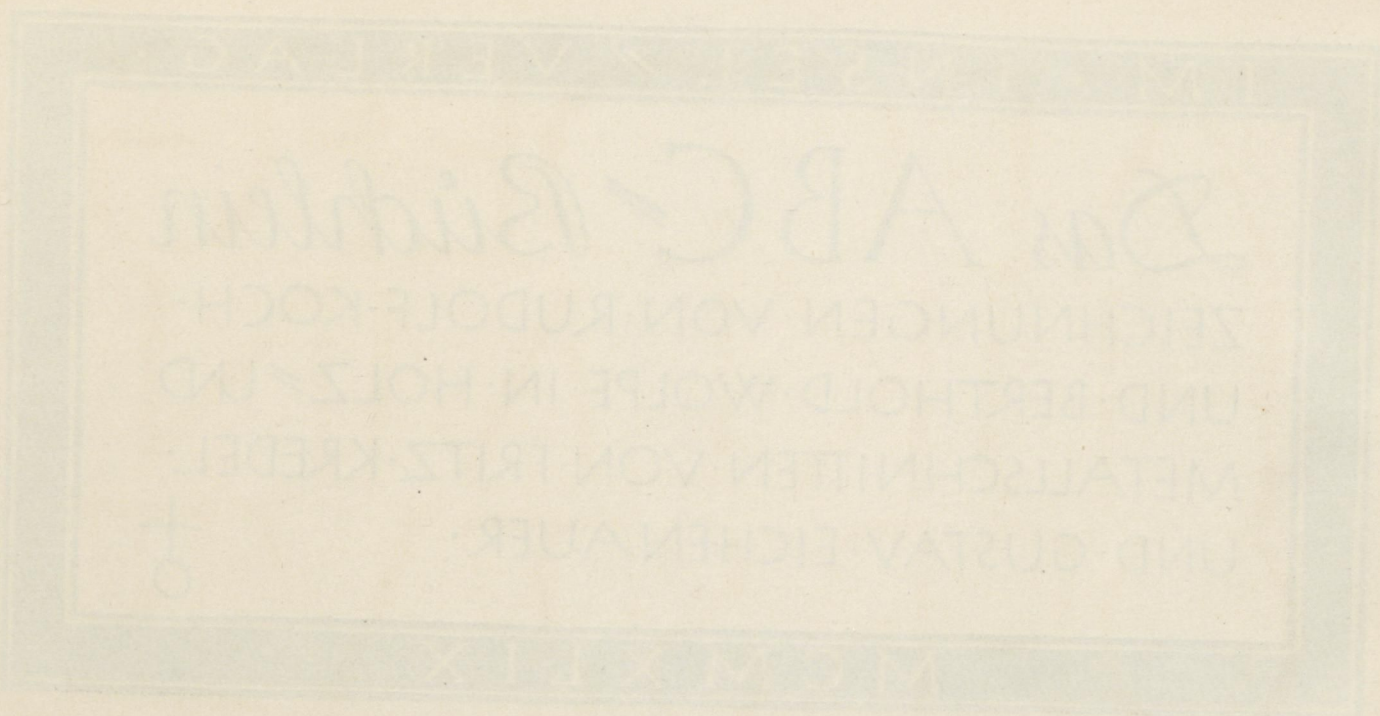
IM · INSEL // VERLAG ·

*Das ABC-Büchlein*

ZEICHNUNGEN · VON · RUDOLF · KOCH ·  
UND · BERTHOLD · WOLPE · IN · HOLZ // UND  
METALLSCHNITTEN · VON · FRITZ · KREDEL ·  
UND · GUSTAV · EICHENAUER ·



· M C M X L I X



DAS ABC DER BÜCHER

ZITIRUNGEN VON RUDOLF KOCH

UND BEETHOLD WOLFF IN HOLZ- UND

METALLSCHNITTEN VON FRITZ KREDEL

VON GUSTAV TICHENAUER

+

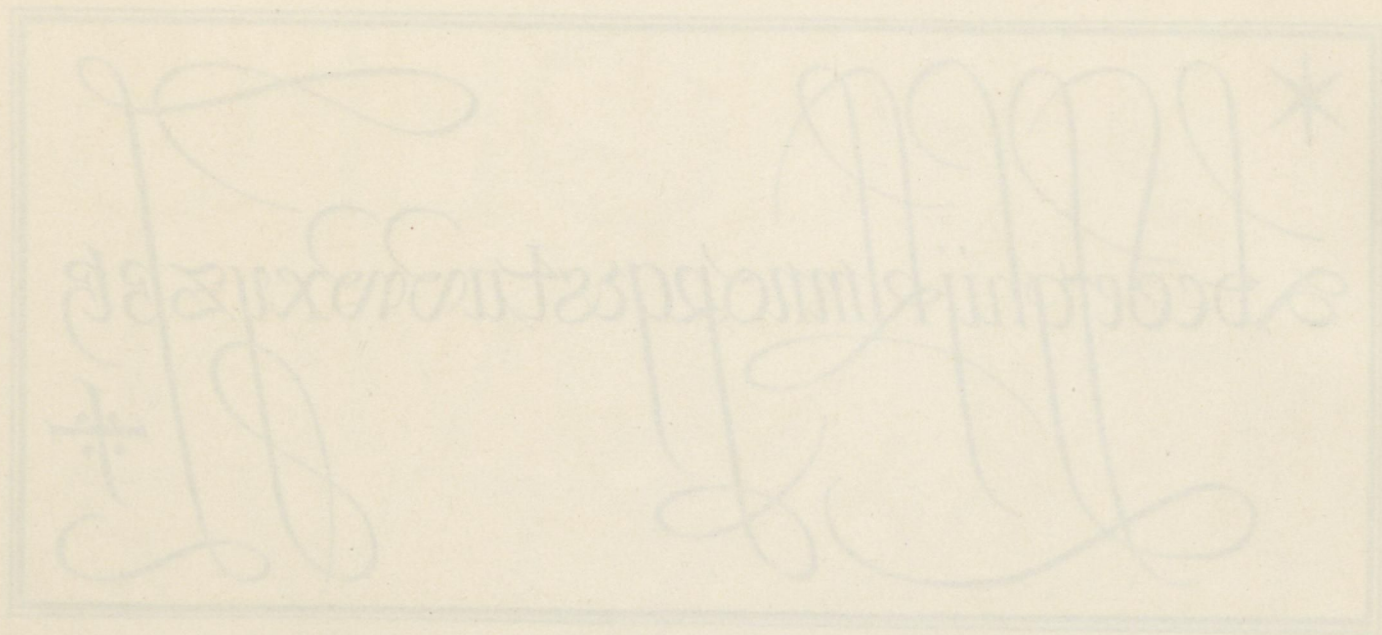
0

A B C D E F G  
H I J K L M N  
O P R S T V Z

OPRSTV  
HIKLMN  
ABCDEF







ABCDEFGHIK

LMNOPQRST

UWXYZ

---

ABCDEFGHIK

L MN O P Q R S T

U V W X Y Z

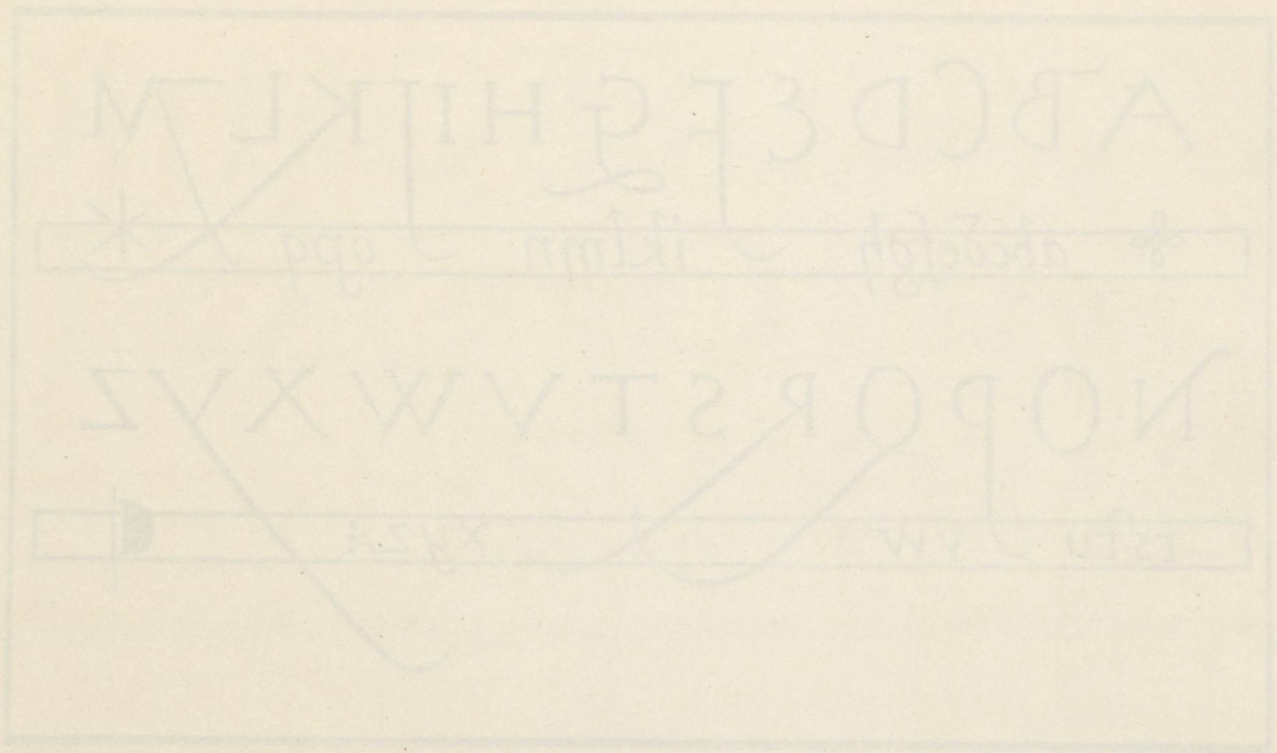
---

A B C D E F G H I J K L M

✂ abcdefgh iklmn opq \*

N O P Q R S T V W X Y Z

rstu vw xyz: |



A B C D E F G H  
I K L M N O P  
Q R S T U V W X Z

IN OMNIBUS  
REBUS  
SIBI



O L L S E f O L J R L M X

O P O R X 7 U 20 X 10 H 2 G 3

Handwritten circular signature or stamp containing cursive letters and numbers, possibly including '170' and '171'.

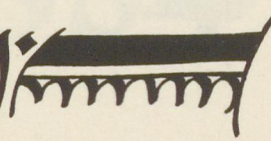
OTR 27 OCT 1978

OTR 27 OCT 1978

OTR 27 OCT 1978

W X Y Z A B C D E F G H I J K L M N O

P Q R S T U V W X Y Z

abcdefghijklmnopqrstuvwxyz. ß ch 

Handwritten text in Gothic script, likely a title or heading, appearing as a faint watermark or bleed-through from the reverse side of the page.

Handwritten text in Gothic script, likely a title or heading, appearing as a faint watermark or bleed-through from the reverse side of the page.

Handwritten text in Gothic script, likely a title or heading, appearing as a faint watermark or bleed-through from the reverse side of the page.

abcde fghij klmno  
pqrstu vwx yz 2  
sß tch & 1384

omni iudicio deo  
et iustitiam et  
4821 & 1021 2

A B C D E F G H I J K L  
M N O P Q R S T U V W  
X Y Z + a b c d e f g h i j k l m n o p q r s  
t u v w x y z : 1 2 3 4 5 6 7 8 9 0 . ß ß ! ? , :

A B C D E F G H I J K  
L M N O P Q R S T U V  
X Y Z + abcdefghijklmnopqr  
stuvwxyz 1234567890 . : ;



abcdefghijklmnop  
opqrsstuvwxyz

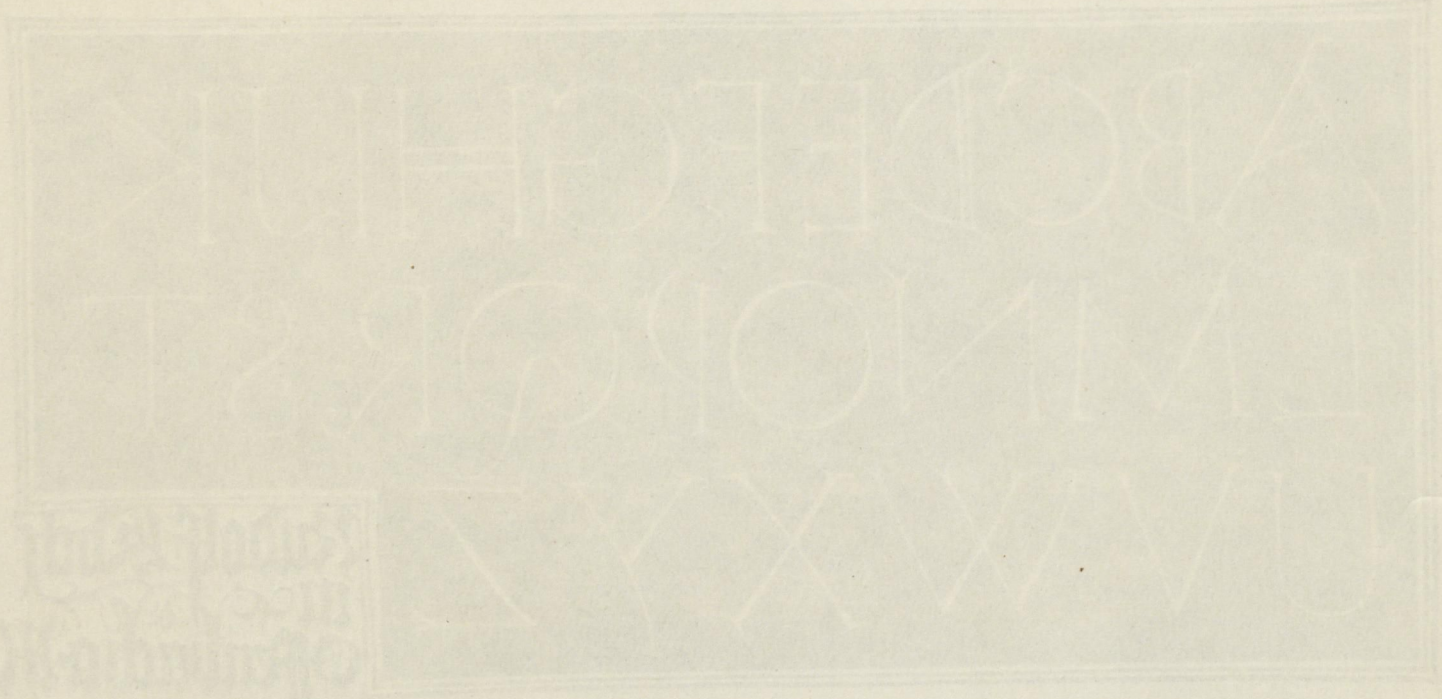
---

apccēstrikman  
syxwvntērpqo

---

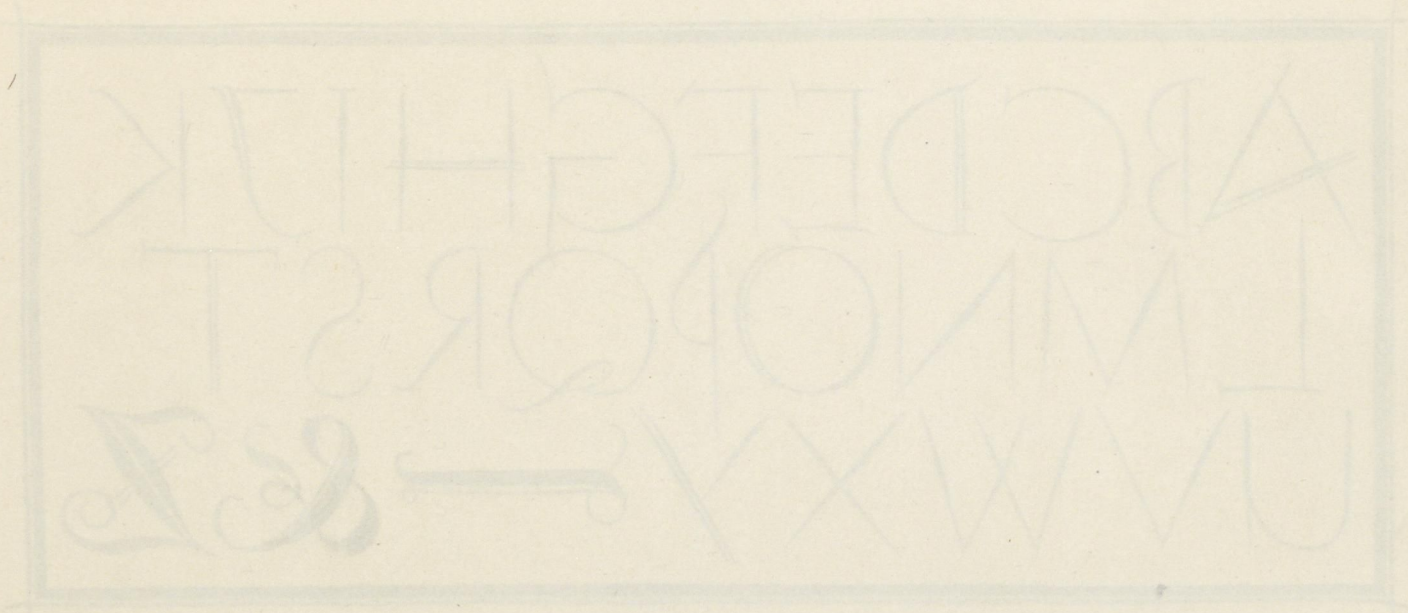
A B C D E F G H I J K  
L M N O P Q R S T  
U V W X Y Z

Rudolf Koch  
in  
Offenbach a. M.



Handwritten text, likely a signature or name, located in the bottom left corner of the page. The text is faint and appears to be written in a cursive or calligraphic style.

A B C D E F G H I J K  
L M N O P Q R S T  
U V W X Y — & Z



abcdefghijklmnopqrstuvwxyz  
abdefghijklmnopqrstuvz

Handwritten text in a dense, decorative Gothic script, likely a page from a medieval manuscript. The text is arranged in approximately four lines, with the first line being the most prominent and the subsequent lines appearing increasingly faint and less legible. The script features elaborate flourishes and a high level of calligraphic detail.



abcdefghijklmnopqrstuwxvz

1234567890:;[ ]&

q r s t u v w x y z / ! ? = +

Handwritten text in a script, likely Devanagari, consisting of three lines of characters.



a	b	c	d	e	f	g	h	i
k	l	m	n	o	p	q	r	
s	t	u	v	w	x	y	z	

g

g

f



i p v t o e o o  
r p q o n m e r  
z v g w v n t o r

t

v

e

A B C D E F G H I J K L M  
N O P Q R S T U V W X Y Z

a b c d e f g h i j k l m n o p q r s t u v w x y  
z sch kß

Handwritten text in a Gothic script, appearing as a mirror image or bleed-through from the reverse side of the page. The text is arranged in two lines.

Handwritten text in a Gothic script, appearing as a mirror image or bleed-through from the reverse side of the page. The text is arranged in two lines.

A B C D E F G H I J K L M N  
O P Q R S T U V W X Y Z

ſ H R M ſ

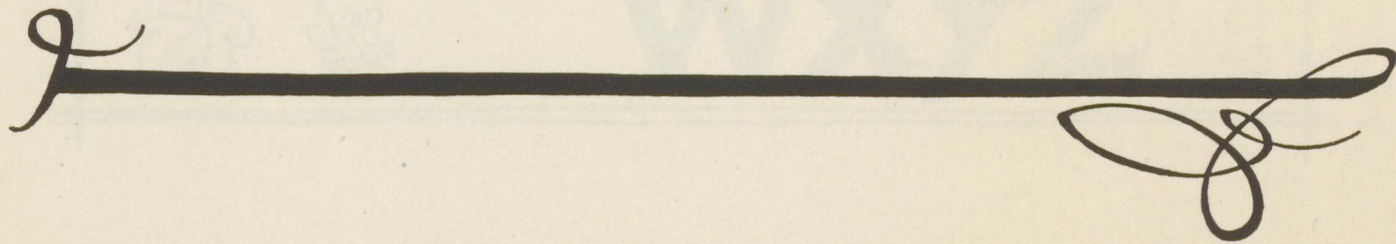
ABCDEF GHIJKL MN  
OPQR STUVWXYZ

PRM R



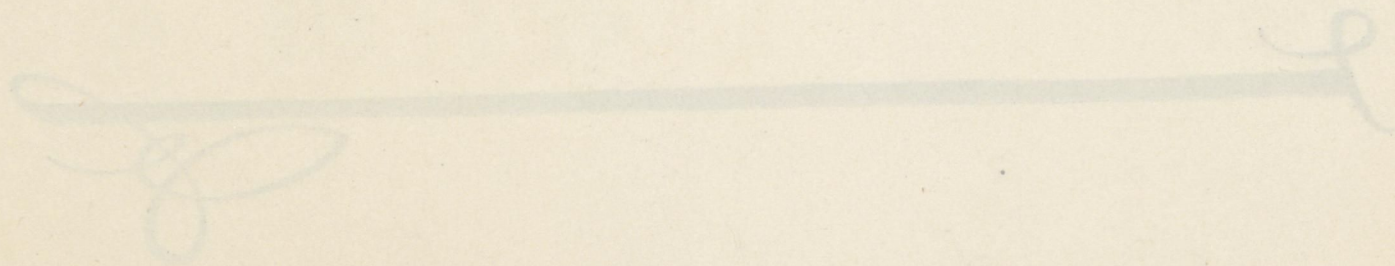
abcdefghijklmnopqrstuwx

yz·ksh1234567890



Abcde fghijklmnopqrstuvw

xyz 1234567890



ABCDEFGHIJKL

MNOPQRSTUVWXYZ



WXYZ

ABCDEFGHIJKL

MNOPQRSTU

VWXYZ



QWERTZUIOYX

ASDFGHJKL +

vwxyz. ß&ij

Handwritten text, likely bleed-through from the reverse side of the page. The text is mirrored and appears to be a list or series of entries, possibly names or dates, written in a cursive script. The text is faint and difficult to decipher.

a b c d e f g h i k l

n m o p q r s t u

v w x y z ; ? ! / =

---

abcdefghijklmnopqrstuvwxyz

abcdefghijklmnopqrstuvwxyz

abcdefghijklmnopqrstuvwxyz

---



abcde fghijklmn

opqrstu vwxyz

h · t · ch

abcdefghijklmnopqrstuvwxyz  
ch . st . s

A B C D E F G H I  
K L M N O P Q R  
S T U V W X Y Z

A B C D E F G H I  
K L M N O P Q R  
S T U V W X Y Z

Handwritten calligraphy featuring large, bold Chinese characters '判' (Pàn) and '二' (Èr) in the center. The characters are surrounded by intricate, flowing cursive script (草书) and decorative flourishes. To the right of the main characters is a small, stylized symbol consisting of three vertical lines intersected by two horizontal lines, resembling a cross or a specific calligraphic mark.



Handwritten text in a cursive script, possibly a signature or a name, appearing as a faint watermark or bleed-through on the page.

Two parallel horizontal lines, likely a decorative element or a separator.

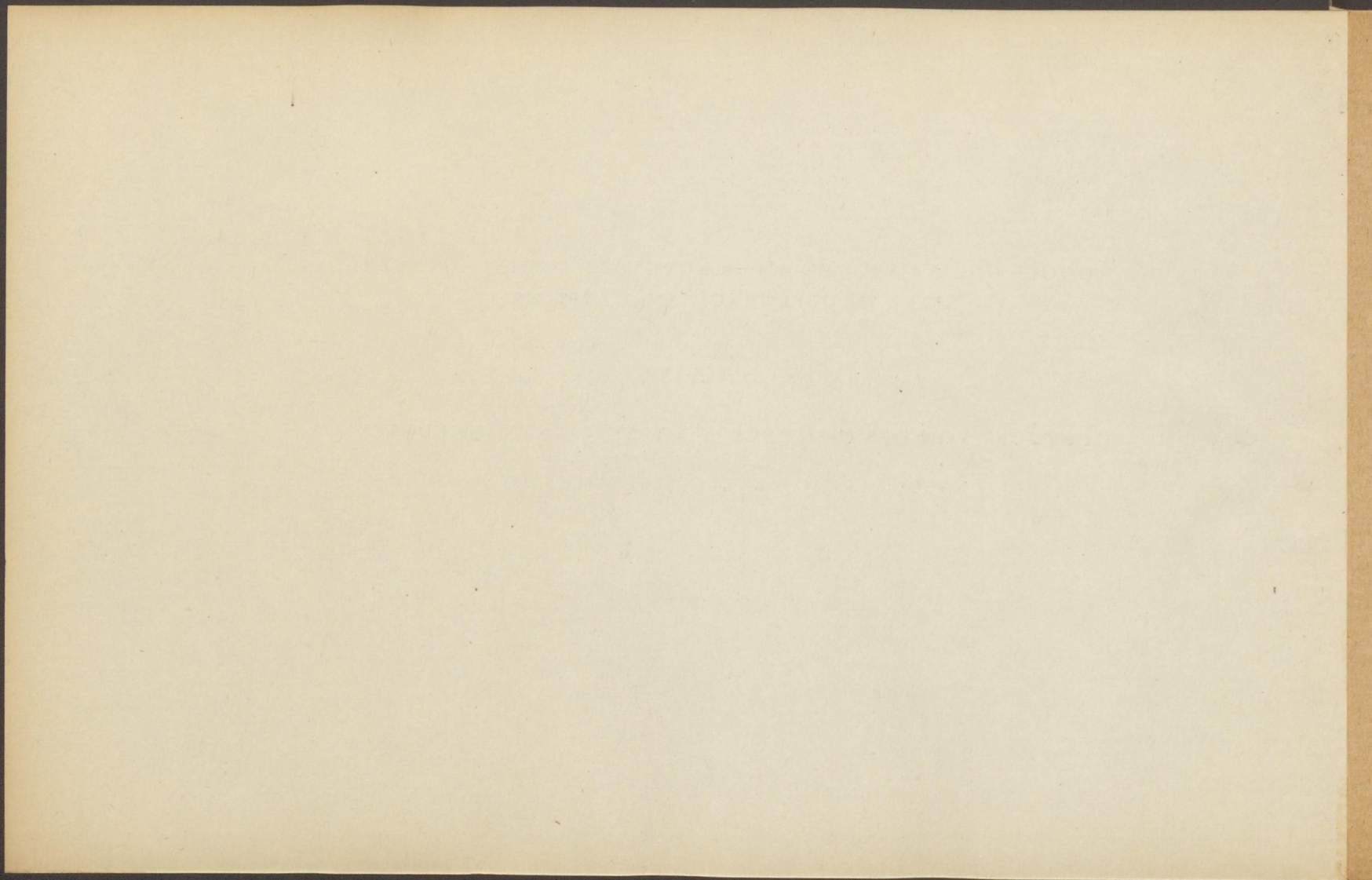
RUDOLF KOCH, GEBOREN AM 20. NOVEMBER 1876 IN NÜRNBERG,  
STARB IN OFFENBACH AM 9. APRIL 1934

1949

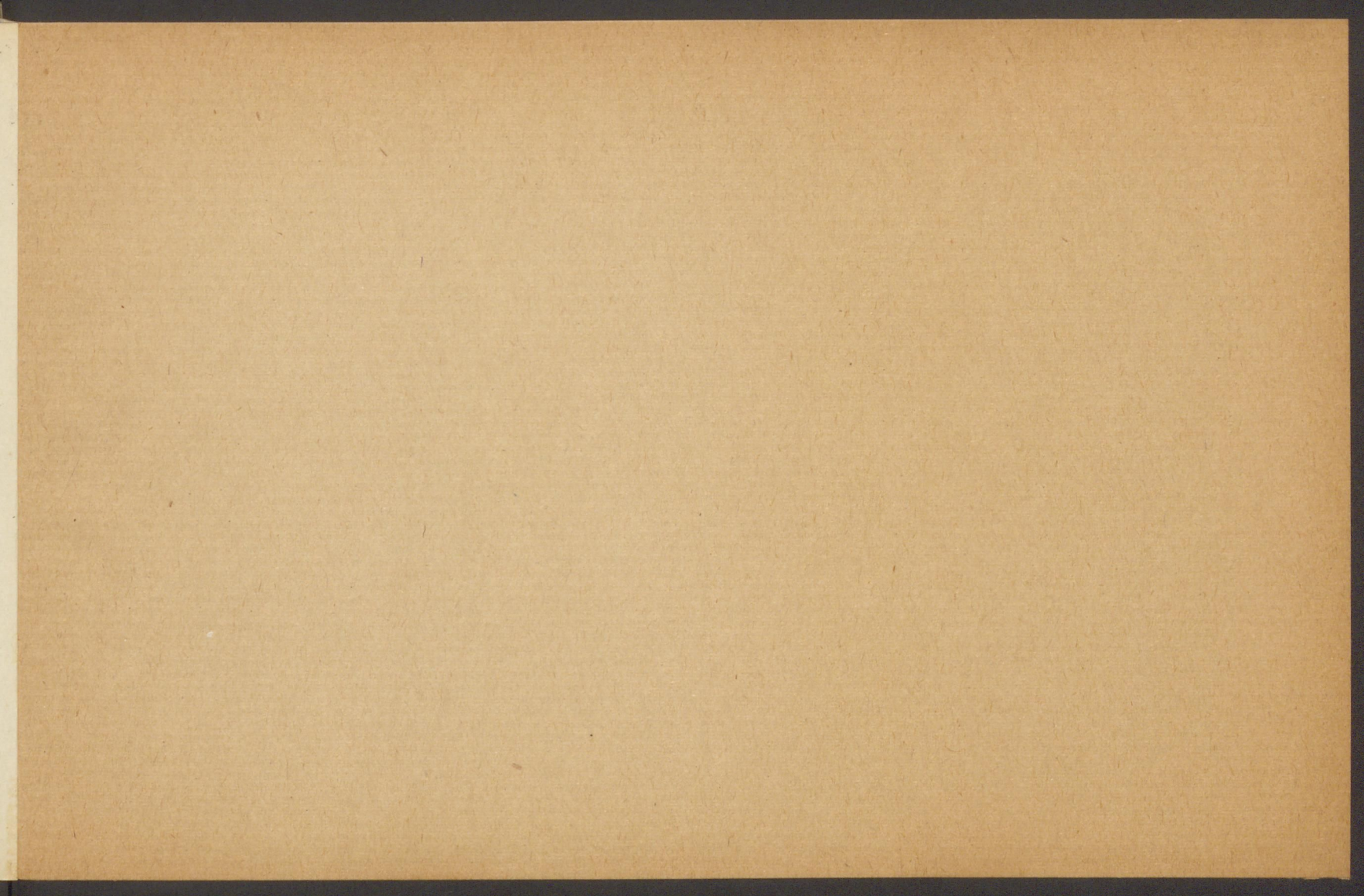
VIERTES UND FÜNFTES TAUSEND

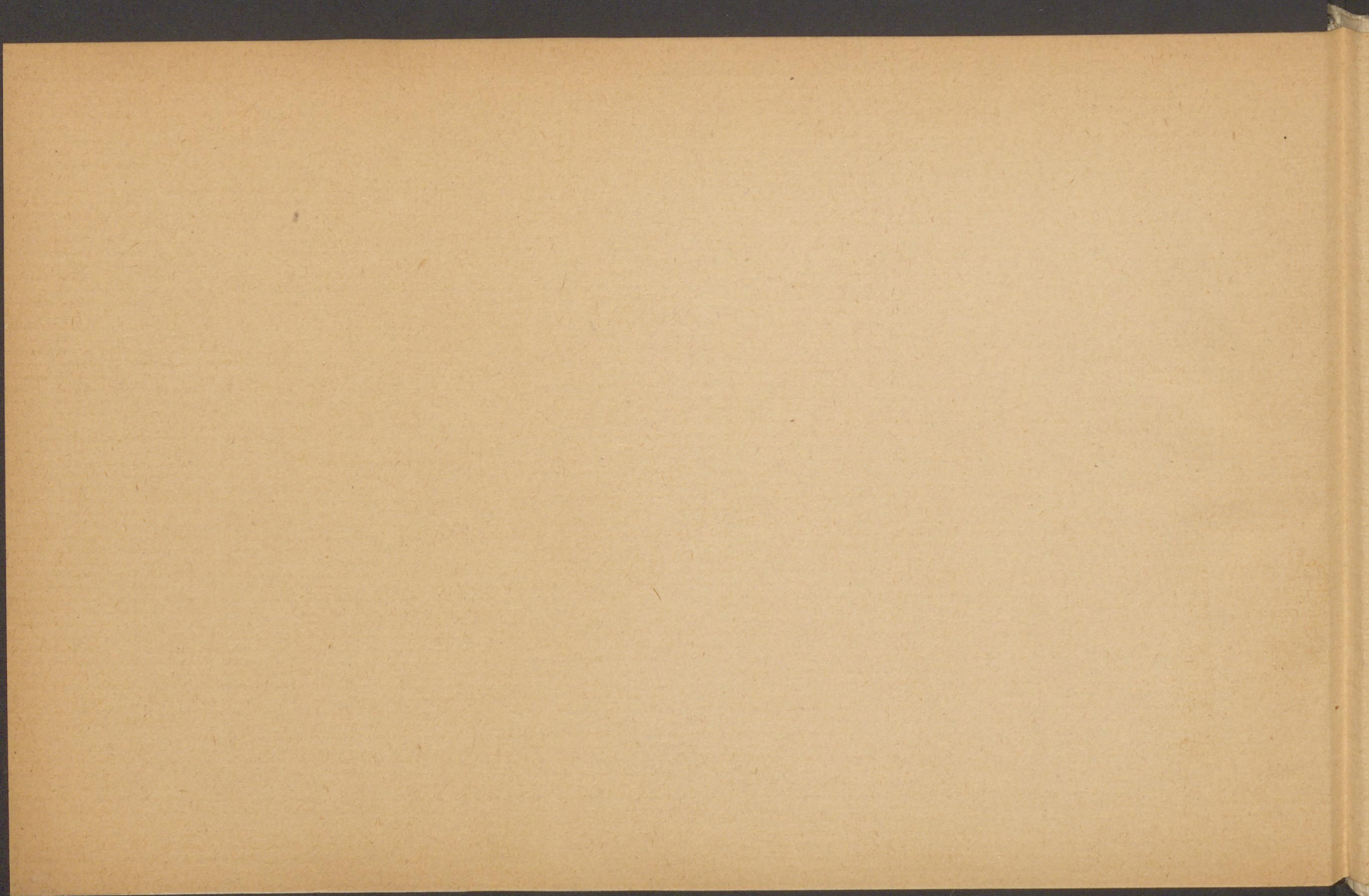
GEDRUCKT VON DER BAUERSCHEN GIESSEREI · FRANKFURT A·M

INSEL-VERLAG ZWEIGSTELLE WIESBADEN









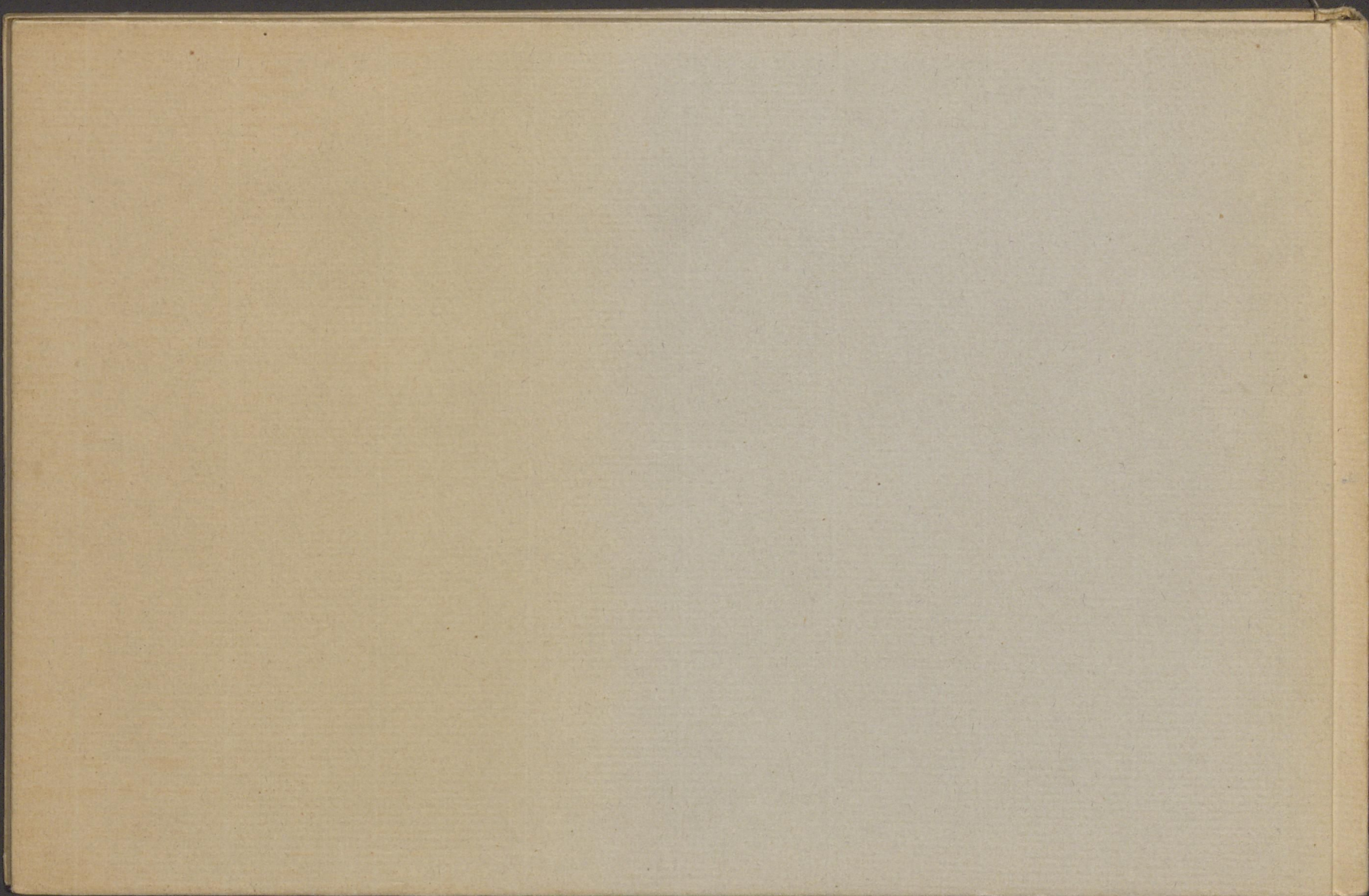
11.4.2.

ABC

73

---

57510



Inches 1 2 3 4 5 6 7 8

Centimetres 1 2 3 4 5 6 7 8 9 10 11 12 13 14 15 16 17 18 19

# Colour Chart #13



Blue

Cyan

Green

Yellow

Red

Magenta

White

3/Color

Black

